

Rocket® CorVu NG

Making Big Business Decisions Just Got Easier—Visualize All of Our Enterprise Data from Any Source and Maximize Your Business Advantage

Deploy on-demand web and mobile dashboards and reports—incorporating rich, intuitive visualizations—that meet the needs of all enterprise users

Integrate information from across your enterprise, including virtually all relational and OLAP data sources

Powerful inline analytics support transforming, merging, tabulating, and federating data across an unlimited number of sources

Predictive data modeling directly integrates forecasts into reports and dashboards

On-demand, one-click charting and wizard-driven generation of “quick reports”

Secure content using interfaces to LDAP and Active Directory

Fully native interface with MultiValue databases: Rocket® D3 DBMS, Rocket® mvBase DBMS, Rocket® UniData, and Rocket® UniVerse.

Stunning visualizations for existing queries, including Rocket SB/XA Queries and Smart Queries

Understanding your data is critical to making the right business decisions. In order to efficiently operate your business, your data must be immediately available to the people who need it—in a form that is easy to understand and to work with. Our next generation Rocket CorVu product (Rocket CorVu NG) has been specifically designed to meet these requirements.

With CorVu NG, users are given unprecedented access to enterprise data using intuitive and dynamic dashboards and reports. Real-time data access and interactive drill-downs provide the right information—at the moment that it's needed—to desktop, web, and mobile users.

Work with the Fresh-est Data All the Time

CorVu NG allows you to provide your users with dashboards and reports that provide up-to-the-minute data. Fresh information can be concurrently drawn in real-time from across the enterprise—from transactional data sources, data warehouses, or from the content of structured files. Better yet, a built-in processing engine means that a data warehouse is not required to read, merge, tabulate, transform, and analyze data from multiple systems.

Non-Technical, Self-Service Reporting

CorVu NG allows non-technical users to reuse and refine existing reports and dashboards, or to build unique reporting solutions to meet individual needs. Available charts and tabular data are simply dragged and dropped onto fresh canvases to create customized dashboards. What's more, dashboards can be saved and shared with colleagues, allowing them to customize their own reports, while leveraging a pre-defined selection of data sets.

See Your Data in Local or Global Context

Understand your data in geographical context, from a single street to an entire continent, or even around the globe. CorVu NG reports and dashboards include support for geospatial maps, allowing you to chart business data on a geographic surface.

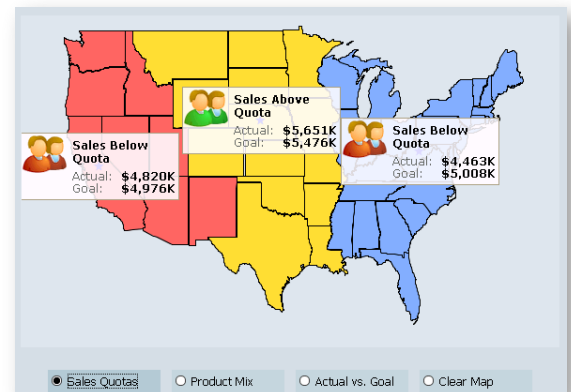
Totally Mashable, Embeddable Content

Recognizing that many enterprise dashboards are often a “mashup” of disparate content, CorVu NG's dashboards include the ability to directly incorporate content from independent web applications, web sites, and disparate text files. In addition, CorVu NG's dashboards can be directly embedded within web pages and third party web applications.

Protect Your Enterprise Data

Manage Data Interactions

CorVu NG's robust application security model sits on your existing database-level security infrastructure and—by connecting to your LDAP/Active Directory or using the built-in security provider—can control every aspect of enterprise-wide interaction with your valuable data.



Control User Access to Data

CorVu NG also allows you to control user access, so users see only what you allow them to see. It includes comprehensive resource governing that allows you to limit the number of rows or bytes that can be returned from designated queries, and the type of queries that can be submitted by users. The security system also tracks usage of all objects, enabling you to audit activity by user, query, report, or dashboard.

Tailor the Look and Feel of Reports for Specific Users

CorVu NG's dashboards and reports can dynamically tailor content, based on an individual user's security level. For example, a sales dashboard may present top-line revenue, as well as profitability, to executives. The same sales dashboard may limit business managers' view to just top-line sales data.

System Requirements

Workstation

CorVu NG's Workstation application (administration and content development) supports Windows, Linux (x86) and Mac OS X 10.6 and higher.

Web Components

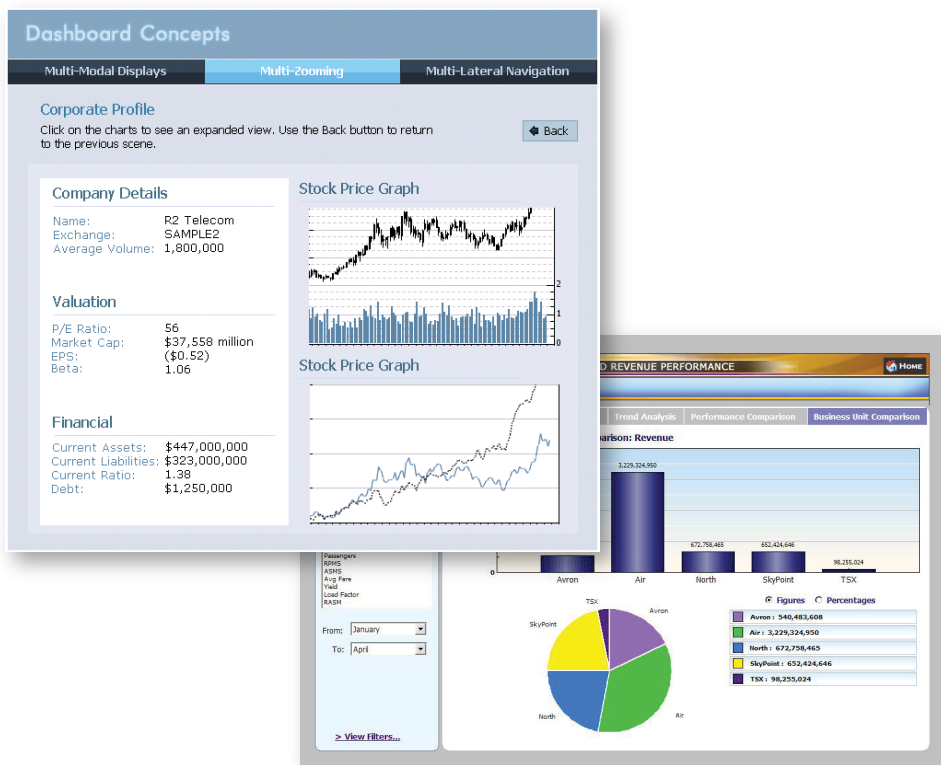
CorVu NG's web components run on any J2EE web application server capable of running Java web applications such as:

- ❖ Tomcat
- ❖ IBM WebSphere

Data Servers

CorVu NG supports the following data servers:

- ❖ Rocket® UniData 7.2 and above
- ❖ Rocket® UniVerse 10.3.0 and above
- ❖ Rocket® D3 DBMS* Windows 9.1 or later
- ❖ Rocket® D3 DBMS* Linux 9.2 or later
- ❖ Rocket® D3 DBMS* AIX 9.1 or later
- ❖ Rocket® mvBase DBMS* 3.0 or later
- ❖ SQL Server



- ❖ MySQL
- ❖ Oracle
- ❖ DB2 (LUW)
- ❖ Informix Dynamic Server
- ❖ Most other JDBC-compliant data sources
- ❖ XMLA-compliant OLAP data sources

* must also be running the 1.8.5+ version of the MVSP

Drivers

A JDBC driver is required in order to access all relational data sources. Drivers are not required for OLAP servers.

Mobile

The free CorVu NG mobile device application, Rocket CorVu, is now available for Android mobile devices and the iPad.

- ❖ Android V2.2 or later for mobile devices running applications and software on the Android operating system
- ❖ Apple iOS V4.2 or later for the iPad

